

Performance Report for OMT22, SN 132

Larry Wurtz, Phd

22 April 2021

Orthomode Transducer Test Program - Agilent E8364C - Wurtz, Wednesday, 21 April 2021, 8:03 P.M.

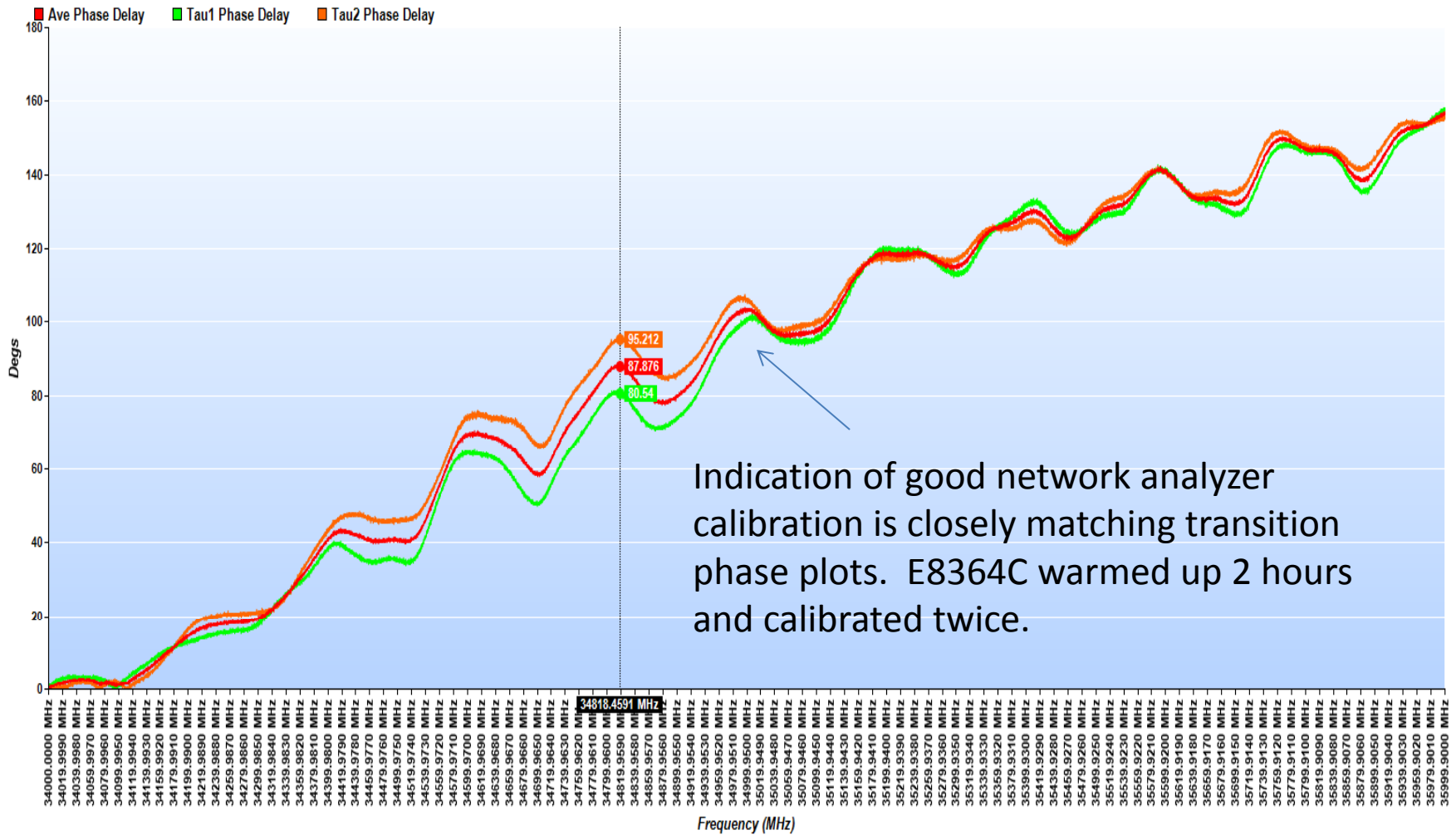
Logo Main Display CR Transition Phase Delay Plot CR Transition S11 Plot Port VSWR Plots Transmission Plots Isolation Plots Cross Polarization Plots

OMT Test Program



Close Console Zoom

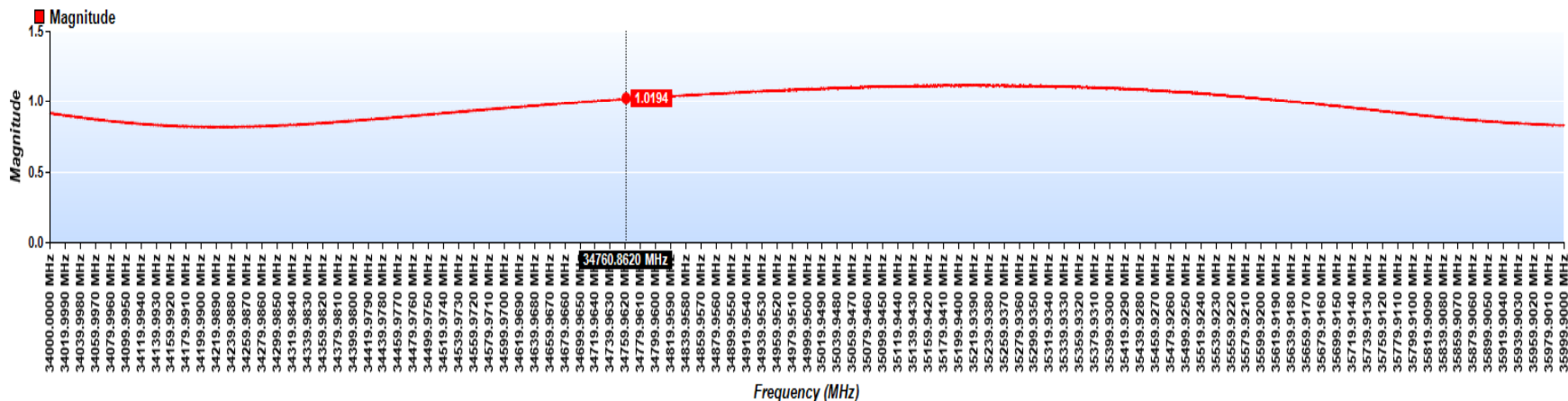
Circular-to-Rectangular Transition Phase Delay



Close Console

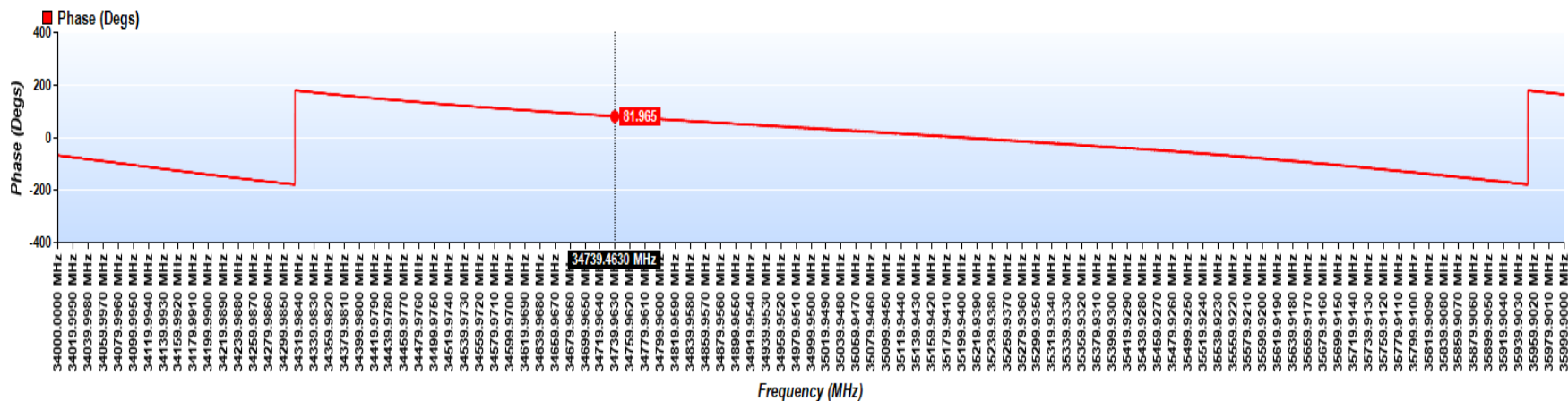
Circular to Rectangular Transition S11 Magnitude

Transition S11 Magnitude



Circular to Rectangular Transition S11 Phase

Transition S11 Phase

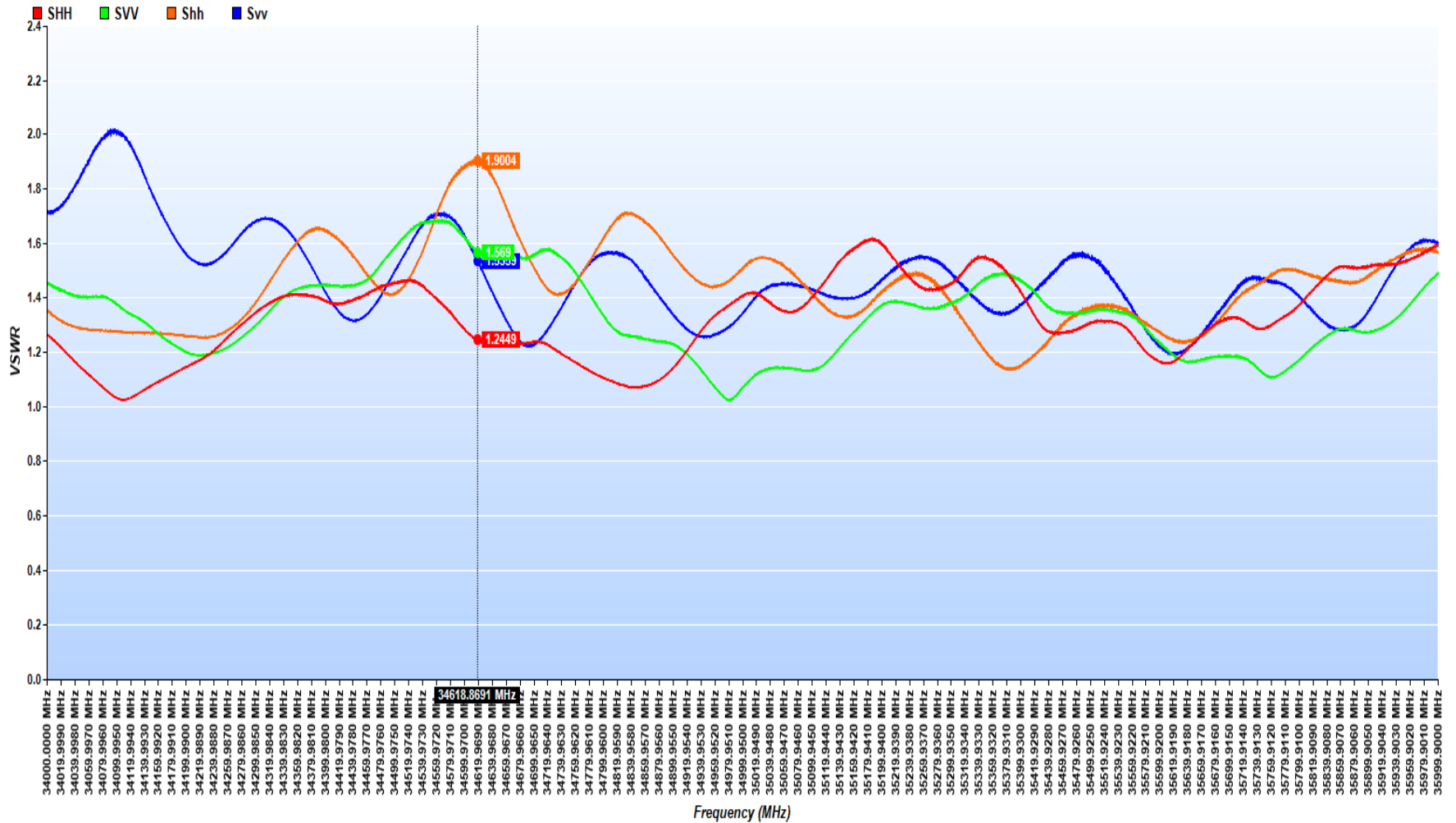


Close Console

Zoom

VSWR

Port VSWR

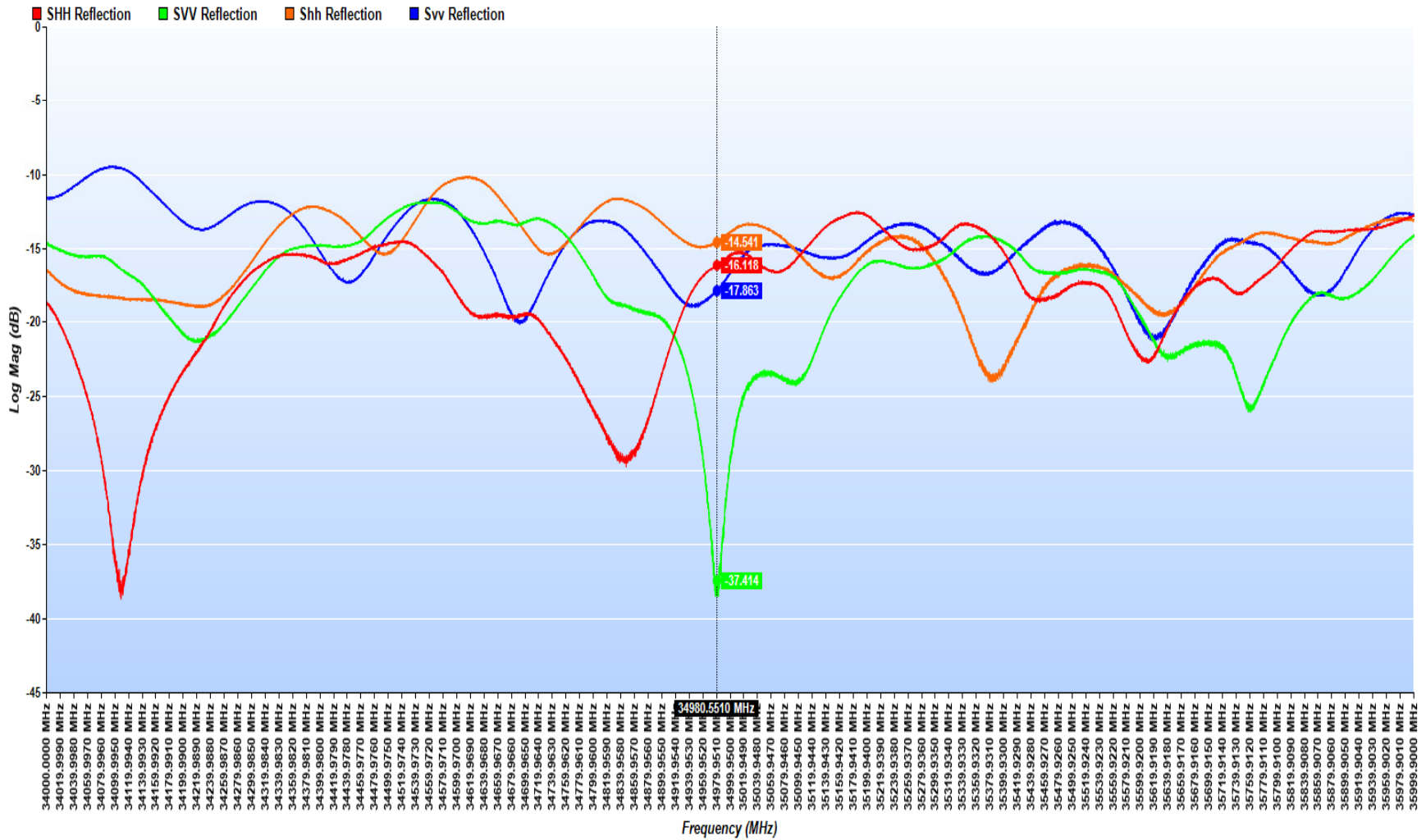


Close Console

Zoom

Log Mag (dB)

Port Reflection (dB)

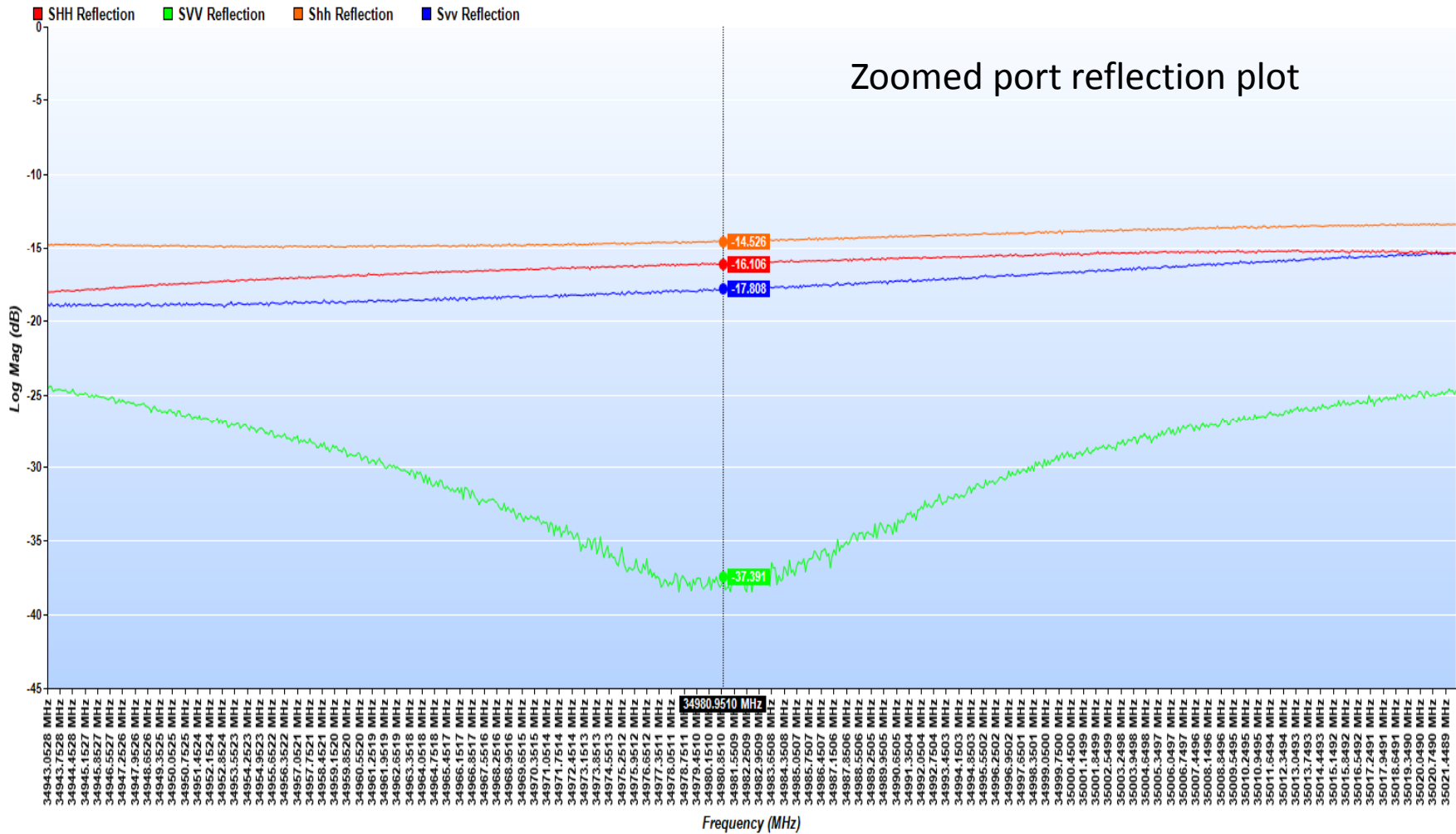


Close Console

Zoom

Log Mag (dB)

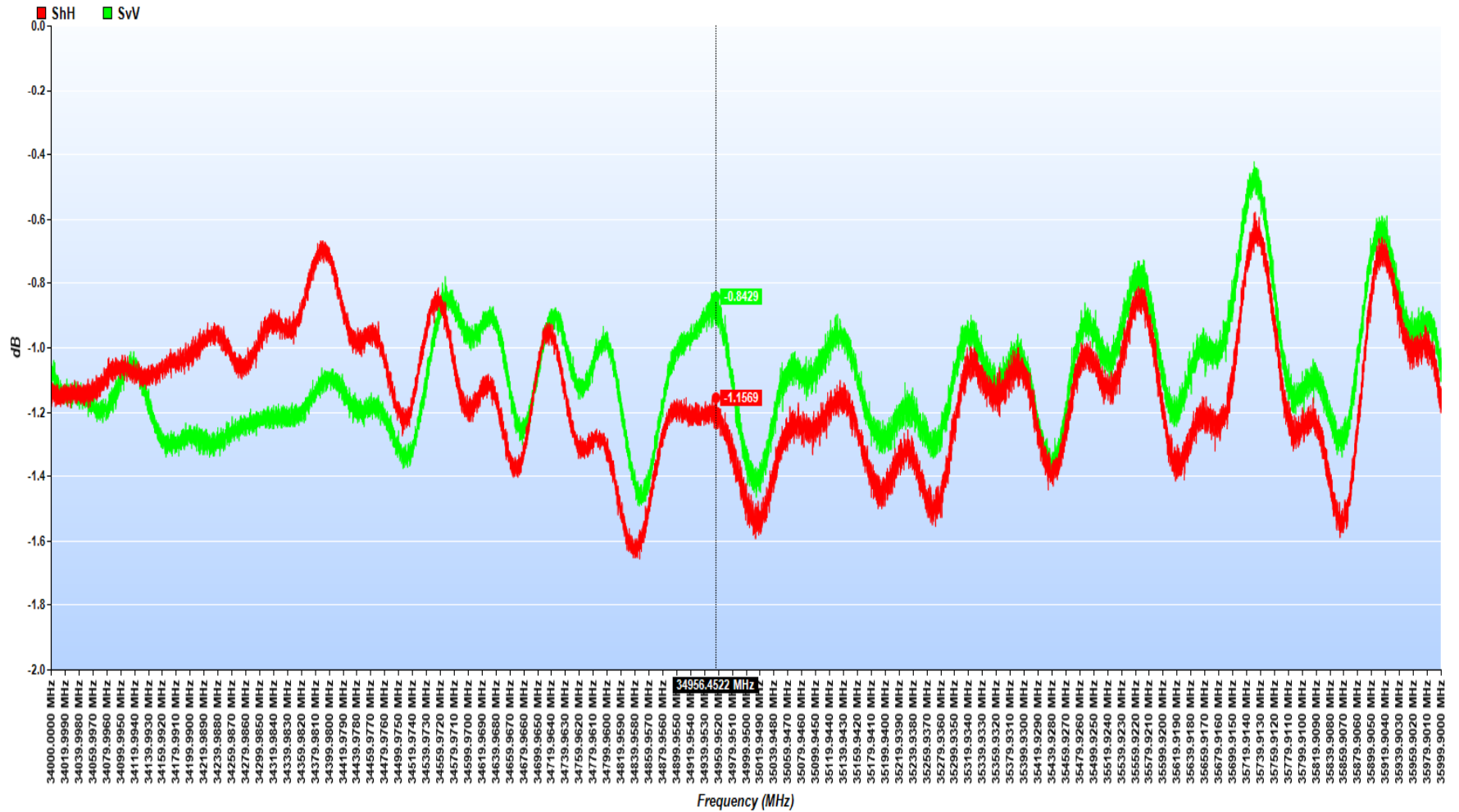
Port Reflection (dB)



Close Console

Zoom

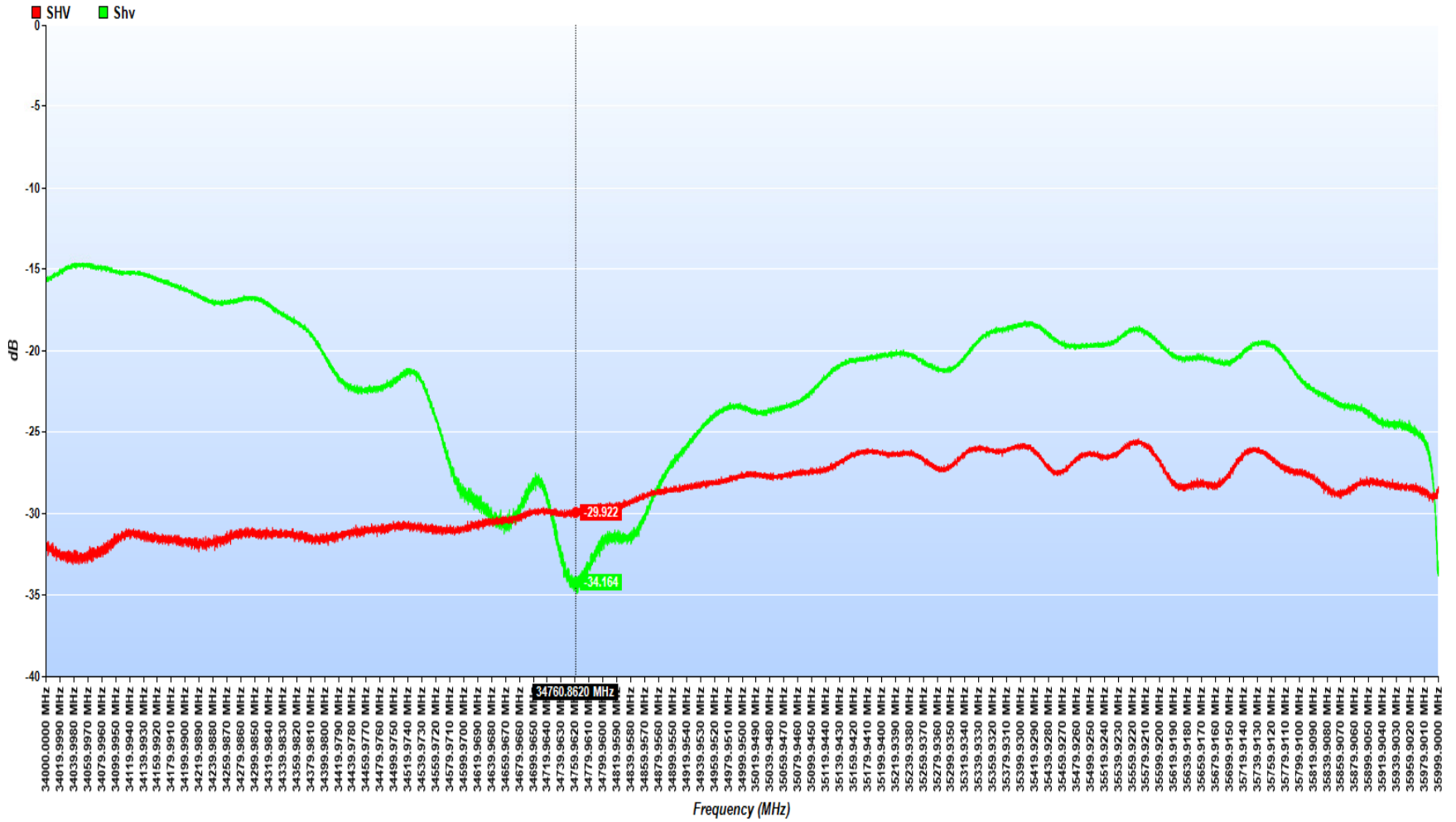
Transmission S-Parameters



Close Console

Zoom

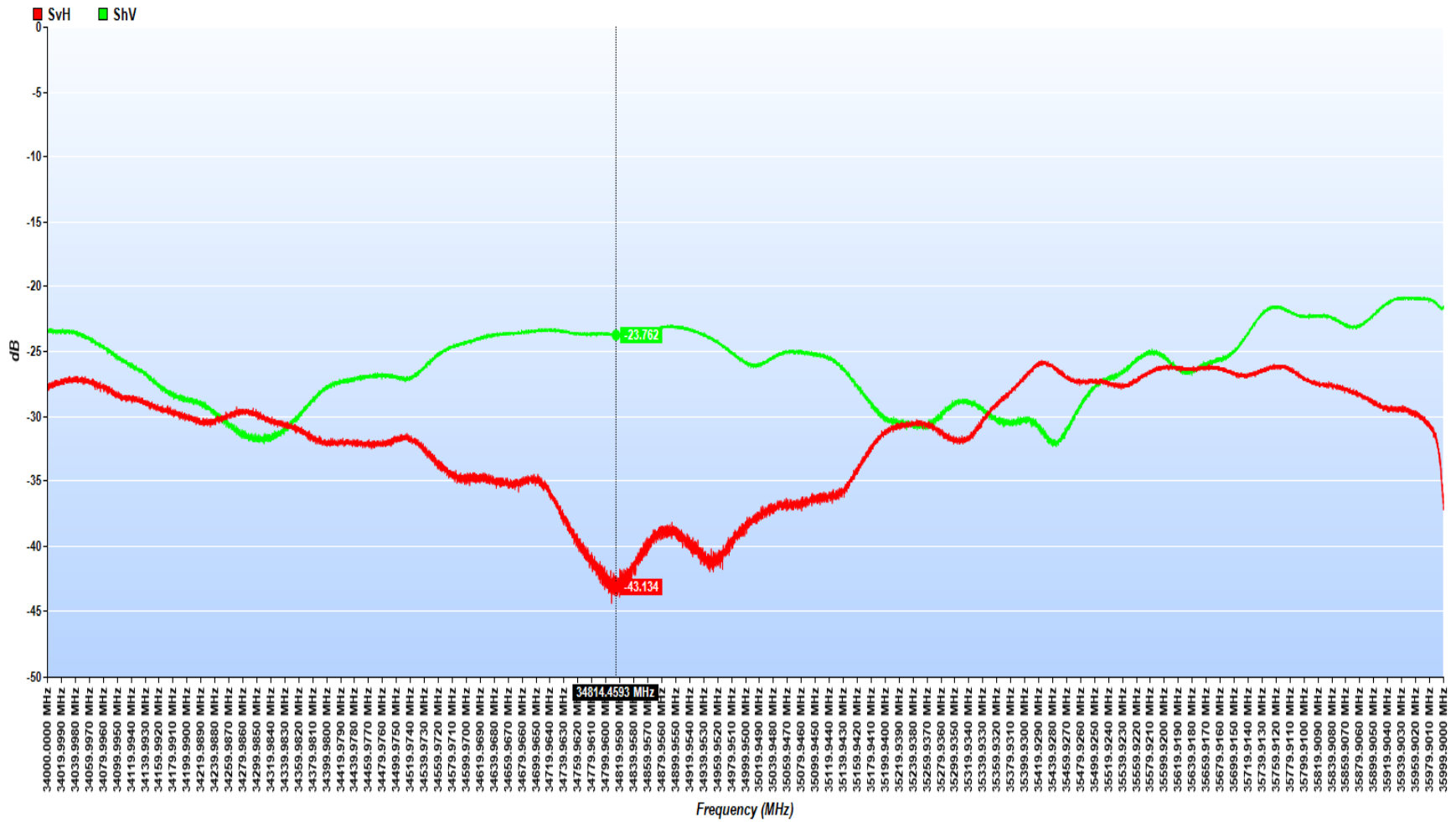
Isolation S-Parameters



Close Console

Zoom

Cross Polarization S-Parameters



Files saved in project directory:
 OMT22_SN132_34GHZ_36GHZ_26March2021_Files

| Name | Date modified | Type | Size |
|--|----------------------|-------------|-----------|
| Documents | 4/22/2021 7:32 PM | File folder | |
| Pictures | 4/22/2021 5:16 PM | File folder | |
| OMT22_SN132_34GHZ_36GHZ_26March2021_s_parameters.s4p | 4/22/2021 5:00 PM | S4P File | 11,420 KB |
| OMT22_SN132_34GHZ_36GHZ_26March2021_Scaphcaph.csv | 4/22/2021 5:00 PM | CSV File | 1,363 KB |
| OMT22_SN132_34GHZ_36GHZ_26March2021_Scaphcapv.csv | 4/22/2021 5:00 PM | CSV File | 1,038 KB |
| OMT22_SN132_34GHZ_36GHZ_26March2021_Scaphh.csv | 4/22/2021 5:00 PM | CSV File | 1,052 KB |
| OMT22_SN132_34GHZ_36GHZ_26March2021_Scapvcapv.csv | 4/22/2021 5:00 PM | CSV File | 1,364 KB |
| OMT22_SN132_34GHZ_36GHZ_26March2021_Scapvv.csv | 4/22/2021 5:00 PM | CSV File | 1,057 KB |
| OMT22_SN132_34GHZ_36GHZ_26March2021_Shcapv.csv | 4/22/2021 5:00 PM | CSV File | 1,047 KB |
| OMT22_SN132_34GHZ_36GHZ_26March2021_Shcapv.csv | 4/22/2021 5:00 PM | CSV File | 1,038 KB |
| OMT22_SN132_34GHZ_36GHZ_26March2021_Shh.csv | 4/22/2021 5:00 PM | CSV File | 1,374 KB |
| OMT22_SN132_34GHZ_36GHZ_26March2021_Shv.csv | 4/22/2021 5:00 PM | CSV File | 1,039 KB |
| OMT22_SN132_34GHZ_36GHZ_26March2021_Svcaph.csv | 4/22/2021 5:00 PM | CSV File | 1,038 KB |
| OMT22_SN132_34GHZ_36GHZ_26March2021_Svcapv.csv | 4/22/2021 5:00 PM | CSV File | 1,050 KB |
| OMT22_SN132_34GHZ_36GHZ_26March2021_Svv.csv | 4/22/2021 5:00 PM | CSV File | 1,377 KB |
| Gconfig.dat | 3/26/2021 4:58 PM | DAT File | 3,126 KB |
| Hconfig_Hh.dat | 3/26/2021 4:36 PM | DAT File | 3,126 KB |
| hconfig_Hv.dat | 3/26/2021 4:41 PM | DAT File | 3,126 KB |
| offset_Gconfig.dat | 3/10/2021 4:17 PM | DAT File | 3,126 KB |
| offset1_Gconfig.dat | 3/10/2021 4:12 PM | DAT File | 3,126 KB |
| offset2_Gconfig.dat | 3/10/2021 4:17 PM | DAT File | 3,126 KB |
| s11_transition.dat | 3/26/2021 4:39 PM | DAT File | 782 KB |
| samplespersweep.dat | 12/11/2020 11:46 ... | DAT File | 1 KB |
| start_frequency.dat | 12/11/2020 11:47 ... | DAT File | 1 KB |
| stop_frequency.dat | 12/11/2020 11:47 ... | DAT File | 1 KB |
| Tconfig.dat | 3/26/2021 4:57 PM | DAT File | 3,126 KB |
| vconfig_Vh.dat | 3/26/2021 4:47 PM | DAT File | 3,126 KB |
| Vconfig_Vv.dat | 3/26/2021 4:49 PM | DAT File | 3,126 KB |

Touchstone-like S-parameter File

Samples per sweep

Start frequency

Stop frequency